

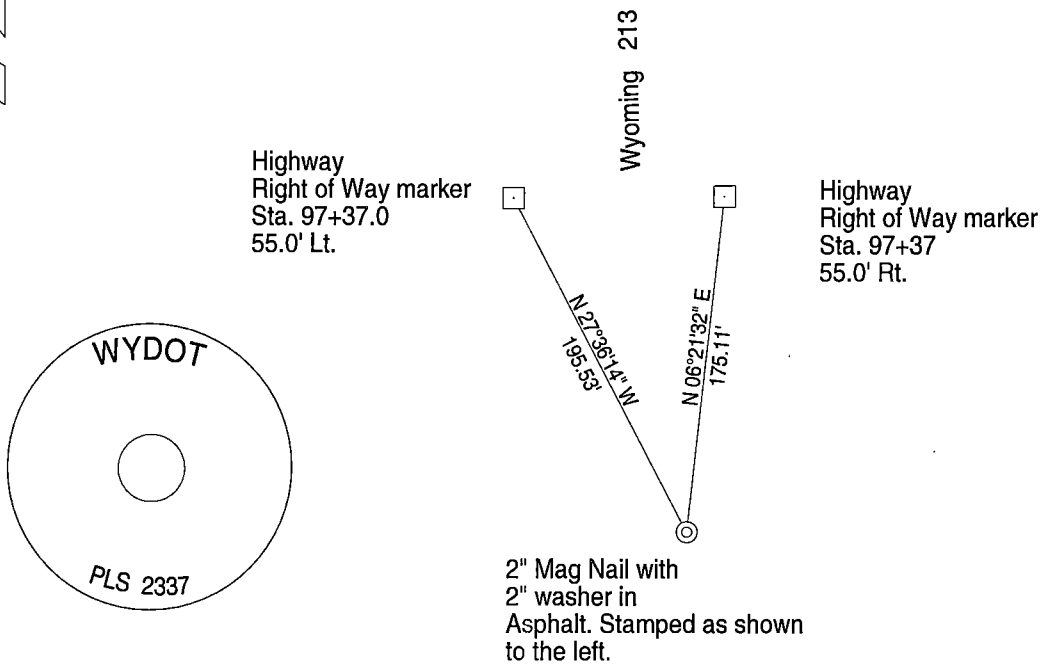
# State of Wyoming Corner Record

(in compliance with the *CORNER PERPETUATION AND FILING ACT*, Wyoming Statutes, 1997, Section 33-29-140 et. seq., and the Rules and Regulations of the Board of Registration for Professional Engineers and Professional Land Surveyors)

Reverse side of this form may be used if more space is needed.

Record of original survey and citation of source of historical information (if corner is lost or obliterated). Description of corner monumentation evidence found and/or monument and accessories established to perpetuate the location of this corner. Sketch of relative location of monument, accessories, and reference points with course and distance to adjacent corner(s) (if determined in this survey). Method and rationale for reestablishment of lost or obliterated corner.

- GLO RECORD** J. Wesley Hammond, U.S. Deputy Surveyor, September 29, 1871.  
40.00 chains Set Sand Stone 17 x 9 x 6 for the 1/4 corner to Sections 17 and 18.
- FOUND** 2-1/2" Aluminum cap on 5/8" rebar 6" below surface of county gravel road set by Steil Surveying Services in 2009. This point was set for the Record of Survey of Burns Cemetery. No Corner Record was filed.
- SET** 2" Mag Nail with 2" washer stamped as shown. Point falls in centerline area of the asphalt pavement of Highway 213.  
Two right of way markers to the north were used for witness points for the 1/4 section corner.



Date of Field Work: June 2017

Office Reference: Project 1102005

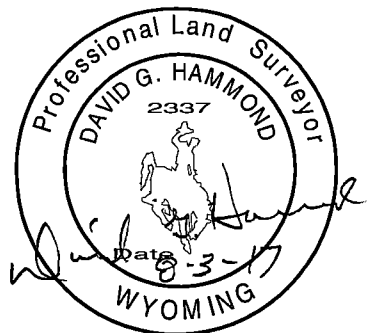
## CROSS INDEX DIAGRAM

	1	2	3	4	5	6	7	8	9	10	11	12	13	14	15	16	17	18	19	20	21	22	23	24	25	
A																										A
B	+	+	+	+	+	+	+	+	+	+	+	+	+	+	+	+	+	+	+	+	+	+	+	+	+	B
C		6			5				4					3					2						1	C
D	+	+	+	+	+	+	+	+	+	+	+	+	+	+	+	+	+	+	+	+	+	+	+	+	+	D
E																										E
F	+	+	+	+	+	+	+	+	+	+	+	+	+	+	+	+	+	+	+	+	+	+	+	+	+	F
G		7			8				9					10					11						12	G
H	+	+	+	+	+	+	+	+	+	+	+	+	+	+	+	+	+	+	+	+	+	+	+	+	+	H
J																										J
K	+	+	+	+	+	+	+	+	+	+	+	+	+	+	+	+	+	+	+	+	+	+	+	+	+	K
L		18			17				16					15					14						13	L
M	+	+	+	+	+	+	+	+	+	+	+	+	+	+	+	+	+	+	+	+	+	+	+	+	+	M
N																										N
O	+	+	+	+	+	+	+	+	+	+	+	+	+	+	+	+	+	+	+	+	+	+	+	+	+	O
P		19			20				21					22					23						24	P
Q	+	+	+	+	+	+	+	+	+	+	+	+	+	+	+	+	+	+	+	+	+	+	+	+	+	Q
R																										R
S	+	+	+	+	+	+	+	+	+	+	+	+	+	+	+	+	+	+	+	+	+	+	+	+	+	S
T		30			29				28					27					26						25	T
U	+	+	+	+	+	+	+	+	+	+	+	+	+	+	+	+	+	+	+	+	+	+	+	+	+	U
V																										V
W	+	+	+	+	+	+	+	+	+	+	+	+	+	+	+	+	+	+	+	+	+	+	+	+	+	W
X		31			32				33					34					35						36	X
Y	+	+	+	+	+	+	+	+	+	+	+	+	+	+	+	+	+	+	+	+	+	+	+	+	+	Y
Z																										Z

Land Surveyor/Firm/ Address  
 David G. Hammond, PLS  
 WYDOT  
 3411 So. 3rd St.  
 Laramie, Wyoming  
 82070  
 Telephone Number: 307-745-2135

This corner record was prepared by me or under my direction and supervision.

**SEAL & SIGNATURE**



**RECP #: 715976**  
**RECORDED 9/15/2017 AT 3:02 PM BK# 2558 PG# 1537**  
 Debra K. Lee, CLERK OF LARAMIE COUNTY, WY PAGE 1 OF 1